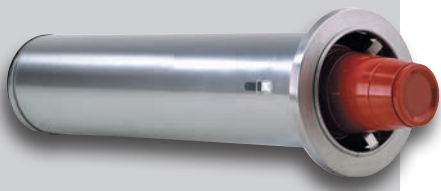


STAINLESS STEEL CONSTRUCTION

Included Cup Dispensers ▾

The **DISPENSE-RITE** ADJ-2 cup dispenser is included with these cabinet models.



See pages 18-19 for additional details.



CTC-R-2SS

CTC-R-3SS

CTC-R-4SS

The **CTC-R Series** Countertop Cup Dispensing Cabinets feature ADJ-2 stainless steel cup dispensers combined with a quality stainless steel cabinet.

Cabinets dispense a variety of 8 oz. to 44 oz. paper, plastic or foam cups with rim diameters ranging in size from 3" – 4 5/8".

Reinforced welded stainless steel cabinet construction provides long term durability. Quick-release mounting brackets allow simple and fast dispenser removal for cleaning or adjustment.

Model Number	Number of ADJ-2 Dispensers	Cup Sizes	Cup Rim Diameter Range	Cabinet Dimensions H x W x D
CTC-R-2SS	2	8 to 44 oz.	3"–4 5/8"	16 1/2" x 8 1/8" x 23"
CTC-R-3SS	3	8 to 44 oz.	3"–4 5/8"	24 1/2" x 8 1/8" x 23"
CTC-R-4SS	4	8 to 44 oz.	3"–4 5/8"	32 1/2" x 8 1/8" x 23"

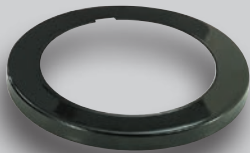
▽ ONE-SIZE-FITS-ALL CUP DISPENSING CABINETS

Key Features ▽

- ONE-SIZE-FITS-ALL
- 8 oz. to 44 oz. Cup Sizes
- Precision Adjustment
- Lid & Straw Organizer
- Paper, Plastic or Foam Cups
- Quick-Release Brackets
- NSF Listed Cup Dispensers

Color Ring Bezels ▽

Stainless ring bezels are standard on all models. Optional gloss black powder coated ring bezels are available for CTC Series cup dispensing cabinets.



- BUMPER BLACK (high gloss)

Model Number	Number of ADJ-2 Dispensers	Cup Sizes	Cup Rim Diameter Range	Cabinet Dimensions H x W x D
CTC-L-2SS	2	8 to 44 oz.	3"–4½"	22¾" x 8¾" x 23½"
CTC-L-3SS	3	8 to 44 oz.	3"–4½"	29¾" x 8¾" x 23½"
CTC-L-2X2SS	4	8 to 44 oz.	3"–4½"	22½" x 16½" x 22¾"



CTC-L-2X2SS



CTC-L-2SS

CTC-L-3SS

The **CTC-L Series** Countertop Cup & Lid Dispensing Cabinets feature ADJ-2 stainless steel cup dispensers combined with a quality stainless steel cabinet.

Cabinets dispense a variety of 8 oz. to 44 oz. paper, plastic or foam cups with rim diameters ranging in size from 3" – 4½".

Unique cabinet design incorporates a removable ABS plastic top to provide storage for lids, straws, stir-sticks and condiment packets. The durable top removes quickly and easily for cleaning.

Quick-release mounting brackets allow simple and fast cup dispenser removal for cleaning or adjustment.

STAINLESS STEEL CONSTRUCTION